

WITH **GREAT POWER**
COMES **GREAT RESPONSIBILITY**

ZOOMLION
ALL TERRAIN CRANE

ZAT1600H853-1G



Max. rated lifting
capacity

160t

Max. load moment
of basic boom

483t.m

Max. lifting height
of main boom

85m

Max. lifting height
of jib

110m

ZAT1600H853-1G

ALL TERRAIN CRANE

Excellent Lifting Performance

- The maximum lifting capacity is 6.4t at the fully extended main boom length of 85m.
- The maximum working radius of the main boom reaches 70m.
- The maximum lifting capacity is 1.3t with (boom + jib) length of 111.9m.

Convenient Operation

- The 50t counterweight can be moved backward by 0.55m—forward position is suitable for confined spaces, while rear position improves performance by 10%.
- All of the counterweights can be assembled or dismantled by itself without the help of a auxiliary crane.
- During transit at low speed, 31t counterweight and 17.5m jib can be attached with the crane.

Outstanding Configuration

- Superstructure is equipped with independent Cummins engine, reducing fuel consumption by 30% compared to single-engine models in the same class.
- Chassis is equipped with 460hp euro v engine, offering robust power.
- Equipped with 385 tires for all wheels.



Crane Data

Hook

● Standard ○ Optional

Icon 1	Icon 2	Icon 3	Icon 4	Icon 5	Icon 6	Icon 7
130t	1.47	1759×850×650	14	-	Double hook	○
110t	1.28	1835×805×650	12	-	Double hook	○
90t	1.05	1665×650×755	12	-	Double hook	○
70t	0.92	1580×650×700	10	-	Double hook	○
70t	0.9	1675×650×580	10	Single hook	-	○
60t	0.75	460×650×1580	8	-	Double hook	●
25t	0.58	1410×650×390	3	Single hook	-	○
8t	0.38	φ405×845	1	Single hook	-	●

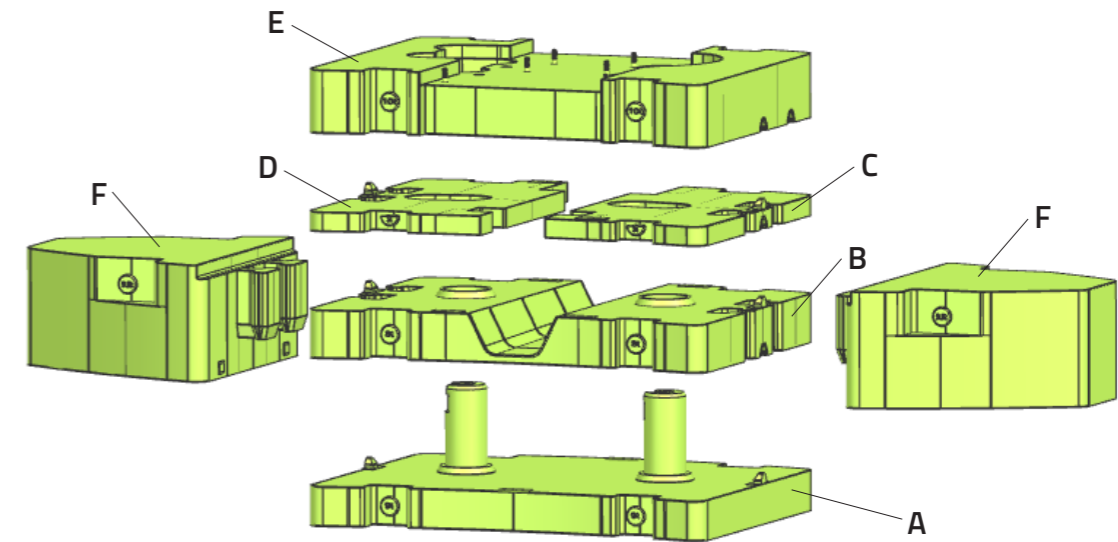
Wire rope

Icon 1	Icon 2	Icon 3	Icon 4
1	φ20mm	360m	8.5t
2	φ20mm	245m	8.5t

Optional components

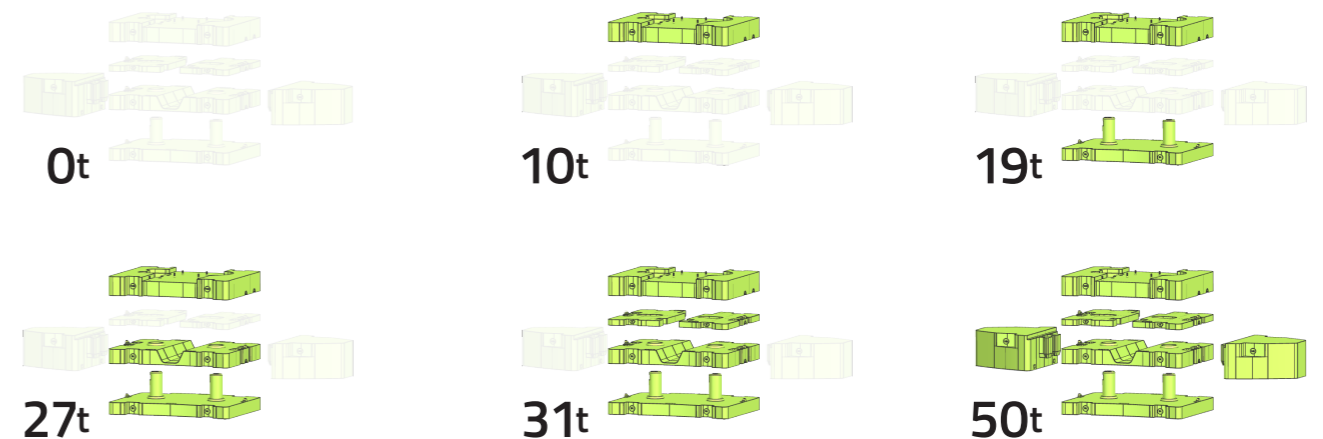
No.	Description	Remarks
1	Base plate of outrigger	Overall dimensions:1550 mm * 1550 mm * 120 mm, 4 pieces
2	Extension	Including 2 pieces of 8 m extensions
3	Hook	Standard configuration: 60 t (ramshorn hook), 8 t Options: 130 t, 110 t, 90 t, 70 t, 25 t
4	Tire	445 tire

Counterweight



	Description	Mass (t)	Transport dimensions (mm)	Quantity (piece)
A	Lower counterweight	9	2990x2430x910	1
B	Intermediate counterweight	8	2990x2430x400	1
C	Upper counterweight I	2	1250x2430x220	1
D	Upper counterweight II	2	1250x2430x220	1
E	Fixed counterweight	10	2990x2430x450	1
F	Side counterweight	9.5	1860x1960x830	2

Counterweight combinations



Specifications

Crane Superstructure

Main boom

8 boom sections made of high-tensile steel
Optimal oviform boom profile of particular tensional rigidity.
Main boom length: 14 m - 85 m

Jib

Jib variants: 10.4 m, 17.5 m, 25.5 m (One section of 8 m extension is available for options.), 33.5 m (Two sections of 8 m extension are available for options.)
17.5 m jib is on the side of the main boom via the pins when the vehicle travels at low speed during transit.

Telescoping system

The telescopic boom is telescoped by the single-stage telescoping cylinder with hydraulic interlocking device.
Rapid-cycle telescoping system with "automatic mode", i.e. all-automatic telescoping to the desired boom length in sequence.
The telescoping state is shown on the monitor. You can select the automatic/manual mode to extend/retract the boom.

Hoist gear

Hydraulic motor + planetary reducer
The main and auxiliary winches can be operated independently or simultaneously.
High-performance rotation-resistant ropes can be used without swivel under load and can be arranged orderly on the drum; the press nipple can be used for rapid max. reeving change.

Luffing gear

One hydraulic cylinder, providing the boom with smooth luffing movements from -0.5° to 80°.

Slewing gear

Two slewing gears, consisting of hydraulic motor and planetary reducer
Slewing speed: 0 – 1.5 rpm

Slewing table

Box-type, torsion resistant design of high-tensile steel, providing super load bearing capacity

Operator's cab

4.0 series spacious panoramic cab with sliding door, outward pushing windshield, front foot pedal, safe guard rail around the roof of the cab.
No instrument console and electric elements are in the front of the cab. Integrated bus key panel is compact, simple and reliable. Night vision background light is clear and makes night work safe.

Vertical 10.4 inch two-in-one LCD (touch screen) integrates all of functions and has good observation angle. It is with USB plug. And thus, it is chargeable.
The cab can be tilted for 0-20° to improve operator's field of vision and reduce the operation intensity.
Cab heater and air conditioning.

Counterweight

50 t total counterweight among which the main body counterweights (5 pieces), the side counterweights (2 pieces)
Assemble or dismantle all of counterweight plates via the counterweight handler and the boom.
Counterweight combinations include 0 t, 10 t, 19 t, 27 t, 31 t and 50 t.

Hook

Standard configuration: 60 t (ramshorn hook), 8 t
Optional configuration: 130 t, 110 t, 90 t, 70 t, 25 t

Hood

In frame-type structure of high functionality and convincing design

Engine

Model: Dongfeng Cummins QSB5.9-C220-30
Type: 6-cylinder in line, water-cooled diesel with 4 stroke cycles, turbo-charged, intercooled
Displacement: 5.9 L
Rated maximum power / RPM: 157 kW at 2200 r/min
Max. output torque / RPM: 820 N.m at 1400 -1800r/min
Off-road China III emission
Capacity of diesel oil tank: 220 L.

Control system

Superstructure operating mode consists of the electro-hydraulic proportional operation and the computer integrated control. Superstructure hydraulic system adopts open and closed combined variable system.
It is of these functions such as the counterweight self-assembly and dismantling function, the operator's cab tilting angle adjustment function.

Monitoring system

Applying the bus technology, the superstructure and the chassis can monitor the outrigger counter-force and the tilting angle of the chassis frame in real time. And thus, prevent the dangerous situations from happening.
The complete vehicle is equipped with several encoders and sensors which can monitor each system state of the vehicle in real time. Combining with the upgraded safety strategy, prevent the dangerous situations from happening. And thus, realize the high efficient safety operation.

Specifications

Crane chassis

Engine

Configuration 1:
Model: Yuchai YCK11460-50
Type: 6-cylinder in line, water-cooled diesel with 4 stroke cycles, turbo-charged, intercooled
Displacement: 10.980 L
Rated maximum power / RPM: 339 kW at 1900 r/min
Max. output torque / RPM: 2200 N.m at 1100 -1500r/min
Exhaust emission limit value: Europe V standard
Capacity of diesel oil tank: 500 L.
Configuration 2:
Model: Weichai WP12.460E50
Type: 6-cylinder in line, water-cooled diesel with 4 stroke cycles, turbo-charged, intercooled
Displacement: 11.596 L
Rated maximum power / RPM: 338 kW at 1900 r/min
Max. output torque / RPM: 2110 N.m at 1100 -1400r/min
Exhaust emission limit value: Europe V standard
Capacity of diesel oil tank: 500 L.

Transmission

Fast 12-gear F12JZ22A automatic switching transmission

Transfer case

2-stage transfer case, with a stand-by steering pump

Axles

Axle load: 13 tons
All axles steer.
Drive type: 10 × 6
Axles 2, 4 and 5 are steer and drive axles. Axles 1 and 3 are steer axles.
The drive axles are equipped with the transversal differentials and differential locks. The through drive axle (axle 4) is equipped with longitudinal differential and differential lock.
With disc brake and drum brake

Outrigger

H type two sectional outrigger, box-shaped section, made of high-tensile steel

Tires

Tire size: 385/95R25 (standard configuration), 445/95R25 (optional configuration)

Steering system

All-wheel variable steering system with 6 steering programs
The steering system, which is mechanically and electro-hydraulically controlled, consists of a double-channel steering gear and the emergency steering system.
Axles 1 and 2 are mechanically steered by the steering

wheel. Axles 3, 4 and 5 are steered by the electro-hydraulic proportional control system.
Steering of the booster cylinder is controlled by the PLC and proportional valve. Steering axles are equipped with angle sensors.

Suspension

All axles with hydro-pneumatic suspension and automatic leveling system
Load equalization between the axle pairs
The axles are hydro-pneumatically sprung via hydraulic cylinders and are hydraulically lockable. Entire vehicle can be raised or lowered and its left / right side can also be raised or lowered independently. All tires can be raised or lowered after the crane is supported on outriggers.
The synchronized extension and retraction movements of suspension cylinders can be realized by the speed control valve fitted in the oil line of suspension control valve.

Brake system

It consists of the service brake, the parking brake (the emergency brake) and the auxiliary brake.
The brake system is with ABS.







Electrical system

The chassis adopts two N200 batteries which are series connected (the rated voltage of each battery is 12 V). The electrical system is single-wired. The negative pole is earthed via the battery master switch to form a circuit with 24 V output voltage.
The standard generator is an alternator (28 Volt and 70 Ah).

Driver's cab

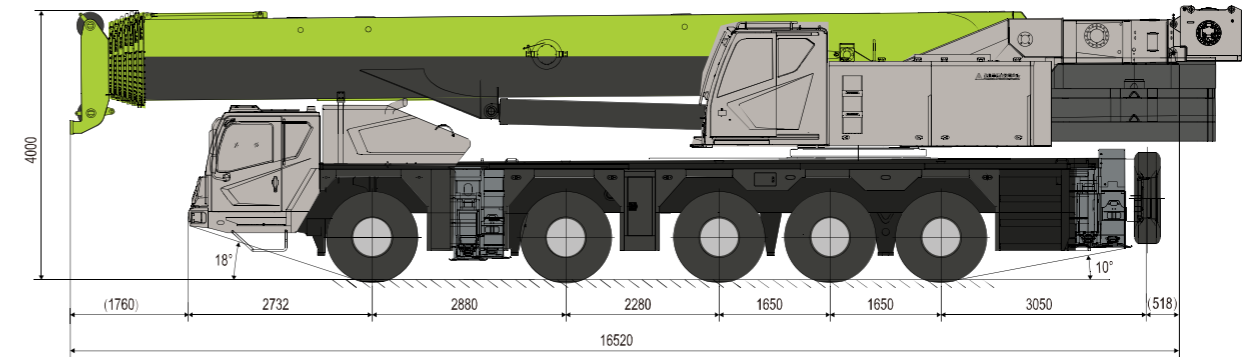
The low-mounted, full-width and all-metal welded spacious cab.
The control elements and displays are arranged according to ergonomic factors.
The cab is with the following features:
Height and inclination adjustable steering wheel, sliding windows, windshield wiper & washing device and large reflectors
Luxurious instrument console equipped with all kinds of instruments, control lights, control switches, cigarette lighter and MP3 player and so on
Adjustable cab heater / defroster and air conditioning
Rearview camera
The multifunctional integral electronic instrument in multiple interfaces with convenient interactive functions is independently developed by Zoomlion. It has a touch screen.
2 comfortable seats with armrests and seat belts.
The pneumatically suspended driver's seat can be adjusted automatically to suit any driver height and size.

Technical Data

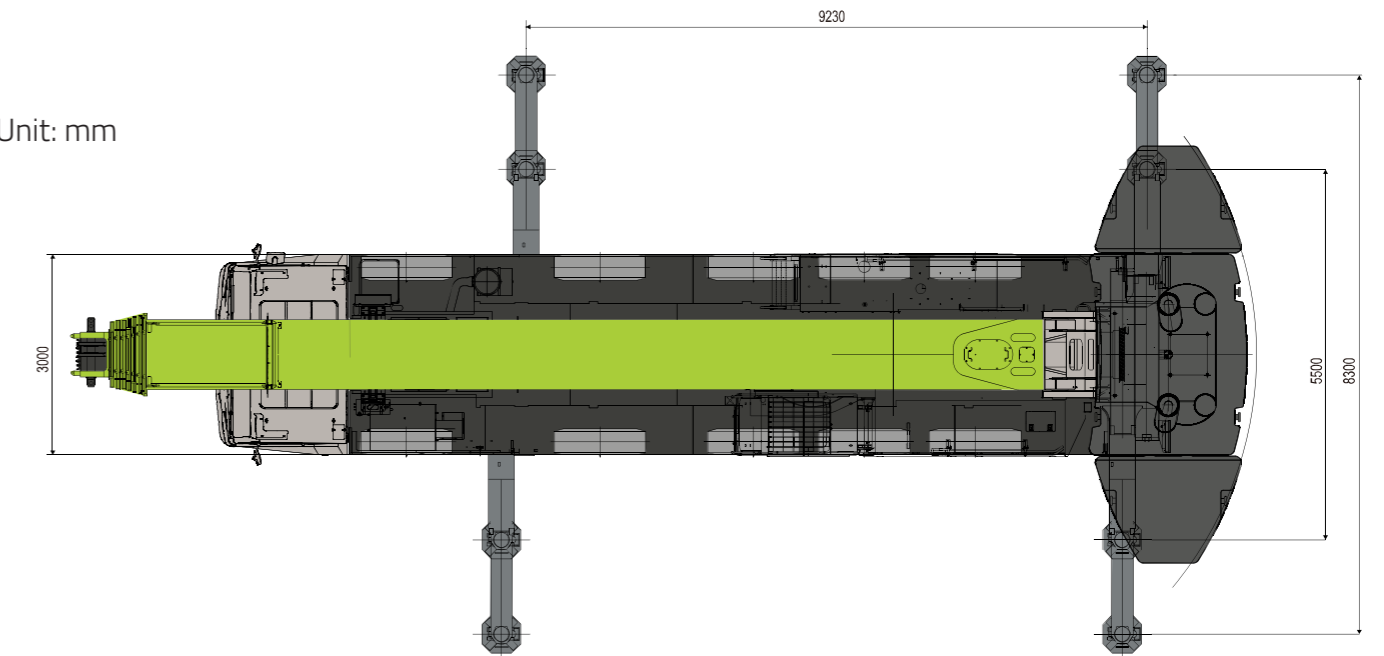
	Item	Unit	Value	Remarks
 Working performance	Max. rated lifting capacity	t	160	Nominal OM
	Max. load moment of basic boom	t.m	483	
	Max. load moment of main boom (fully extended)	t.m	209	
	Max. lifting height of basic boom	m	15	
	Max. lifting height of main boom	m	85	
	Max. lifting height of jib	m	110	
 Working speeds	Max. hoist rope speed (main winch)	m/min	135	The outmost layer
	Boom derricking up time	s	70	
	Boom extending time (8-section)	s	880	
	Slewing speed	r/min	0 - 1.5	
 Driving	Max. operation altitude	m	2000	
	Max. driving speed	km/h	80	
	Max. gradeability	%	48	
	Min. turning diameter	m	18.5	
	Min. ground clearance	mm	326	
	Limits for exhaust pollutants and smoke		Europe V	
	Front overhang angle	°	18	
	Rear overhang angle	°	10	
 Mass	Deadweight in driving condition (total mass)	kg	60000	These components such as the hook, the movable counterweight, the jib, the rooster sheave, the auxiliary winch, the auxiliary hoist rope, the spare tire and the spare tire bracket.
	Complete vehicle kerb mass	kg	59870	
	Single axle load	kg	12000	
 Engine	Model		YCK11460-50 (Yuchai) WP12.460E50 (Weichai)	
	Max. power	kw/rpm	339/1900 (Yuchai) 338/1900 (Weichai)	
	Max. output torque	N·m/rpm	2200/1100~1500 (Yuchai) 2110/1000~1400 (Weichai)	
	Oil consumption per hundred kilometers at constant speed	L	85	60 t travel mode Constant speed: 50 km/h
 Dimensions	Overall dimensions (L×W×H)	mm	16520×3000×4000	
	Outrigger spread (W)	m	Completely extended: 8.3 m; intermediately extended: 5.5 m	
	Outrigger spread (L)	m	9.23	
	Slewing radius of counterweight tail	mm	5270 (counterweight front position) 5820 (counterweight rear position)	
	8-section main boom length	mm	14 - 85	
	Boom angle	°	-0.5 - 80	
	Jib length	m	10.4, 17.5	Options: 25.5 m, 33.5 m

Dimensions




Unit: mm



Unit: mm



Travelling mode

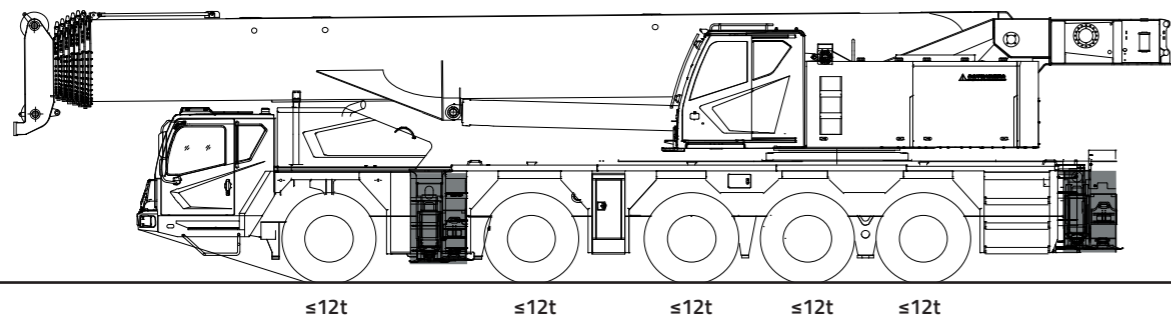
-  Deadweight
-  Max. driving speed
-  Max. gradeability

1. When this vehicle is in the driving order or in the transition order, the driver should obey the laws and regulations as well as the stipulations stated in the documents attached with this product. Furthermore, the driver should be fully responsible for any of illegal behaviors.
2. As for the below-mentioned driving or transition parameters, the following prerequisites should be fulfilled:
 - The vehicle is in an intact and good condition.
 - The road surface should be dry, level and solid asphalt or concrete one which has good adhesive force
 If the road is in the bad condition or it is wet and slippery, the gradeability and the parking grade will decrease. And the brake distance will become longer.
3. Travel modes ② and ③ are applied to the short-distance transit off-road conditions with the counterweight. Before transition, the field engineer should confirm the safe transit plan according to the conditions of the vehicle, the road and the weather. After that, carry out the transition operation according to the transit plan.
4. The vehicle speed should be strictly limited under travel modes ② and ③. Otherwise, the following situations will occur.
 - The steering will be out of control.
 - The brake distance will be too long.
 - The service life of the parts and components of the driving system will shorten. Or even the parts and components are damaged.

① Road travel mode (60 t)




 60t  80km/h  45%

Under the state of 8-section boom and all of outriggers, these components such as the hook, the movable counterweight, the jib, the rooster sheave, the auxiliary winch, the auxiliary hoist rope, the spare tire and the spare tire bracket are removed from the vehicle.
During the long-distance traveling, keep the vehicle speed below 80 km/h. Max. permissible gradeability is 45%.

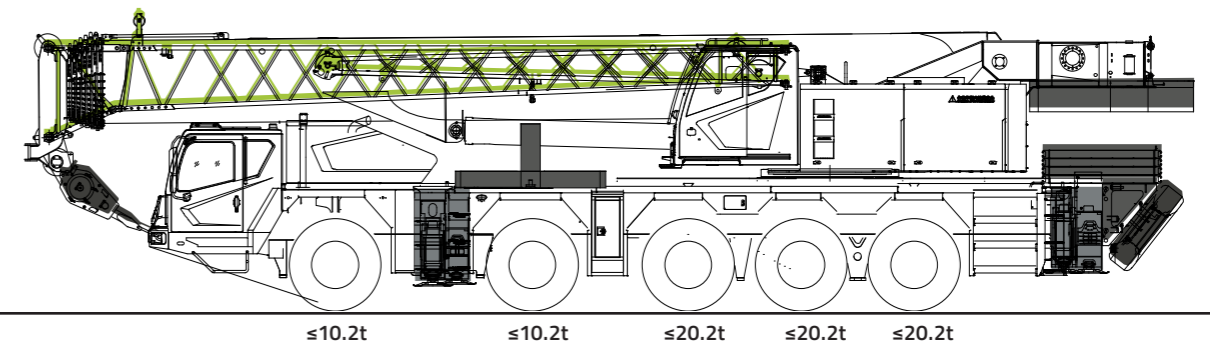


Travelling mode

② Off-road transit travel mode (total mass 81 t)

 81t  20km/h  29%

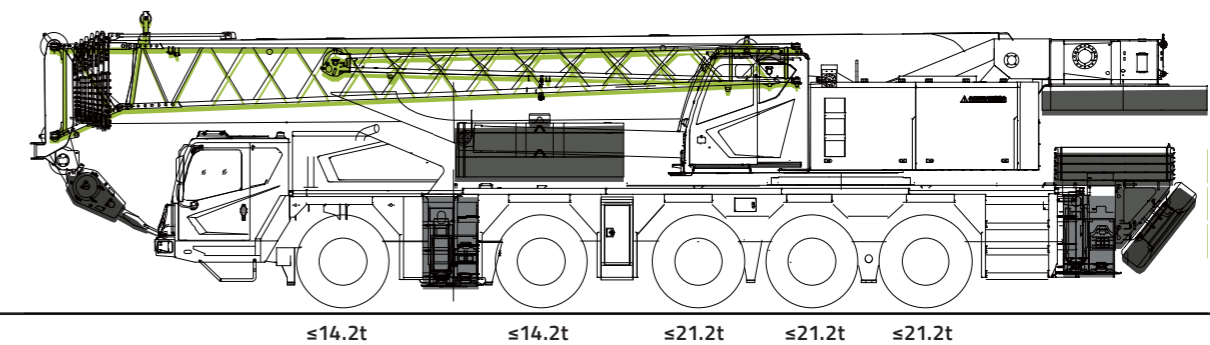
Under the state of 8-section boom and all of outriggers, the auxiliary winch and the auxiliary hoist rope are removed from the vehicle.
These components such as the main hook, 17.5 m jib, 9 t movable counterweight, 10 t fixed counterweight, the rooster sheave, the spare tire and its bracket, the base plates of outriggers as well as the bracket are attached with the vehicle.
During the short-distance off-road transit, keep the vehicle speed below 20 km/h. Max. permissible gradeability is 29%.



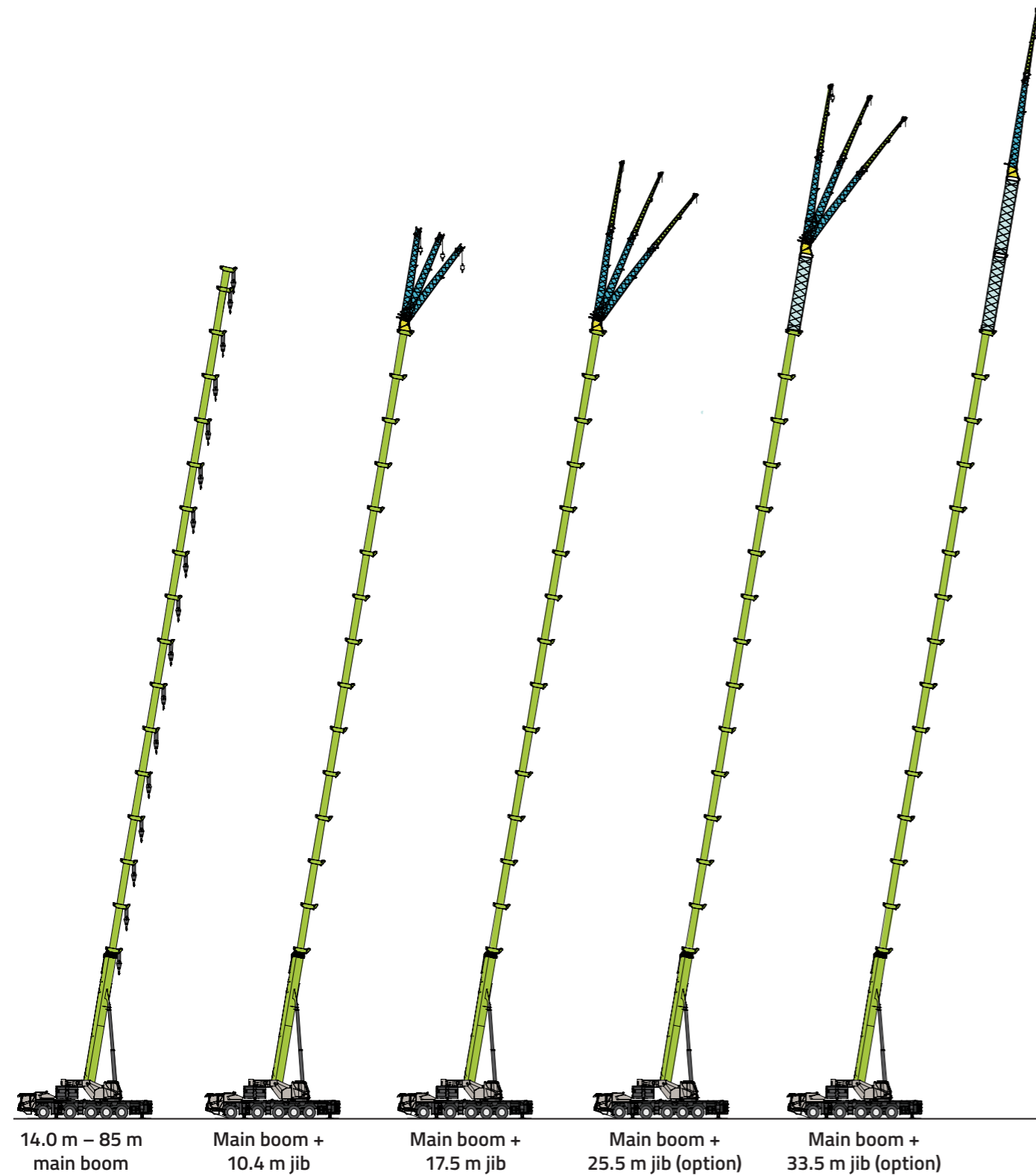
③ Off-road transit travel mode (total mass 92 t)

 92t  20km/h  27%

Under the state of 8-section boom and all of outriggers, these components such as the main hook, 17.5 m jib, 21 t movable counterweight, 10 t fixed counterweight, the rooster sheave, the spare tire and its bracket, the base plates of outriggers as well as the bracket are attached with the vehicle.
During the short-distance off-road transit, keep the vehicle speed below 20 km/h. Max. permissible gradeability is 27%.



Boom/Jib Combination



Lifting heights + Lifting capacities

This crane has lifting capacity tables of multiple and different OMs. The operator should select the corresponding lifting capacity tables to determine the rated load according to the actual operation situations.

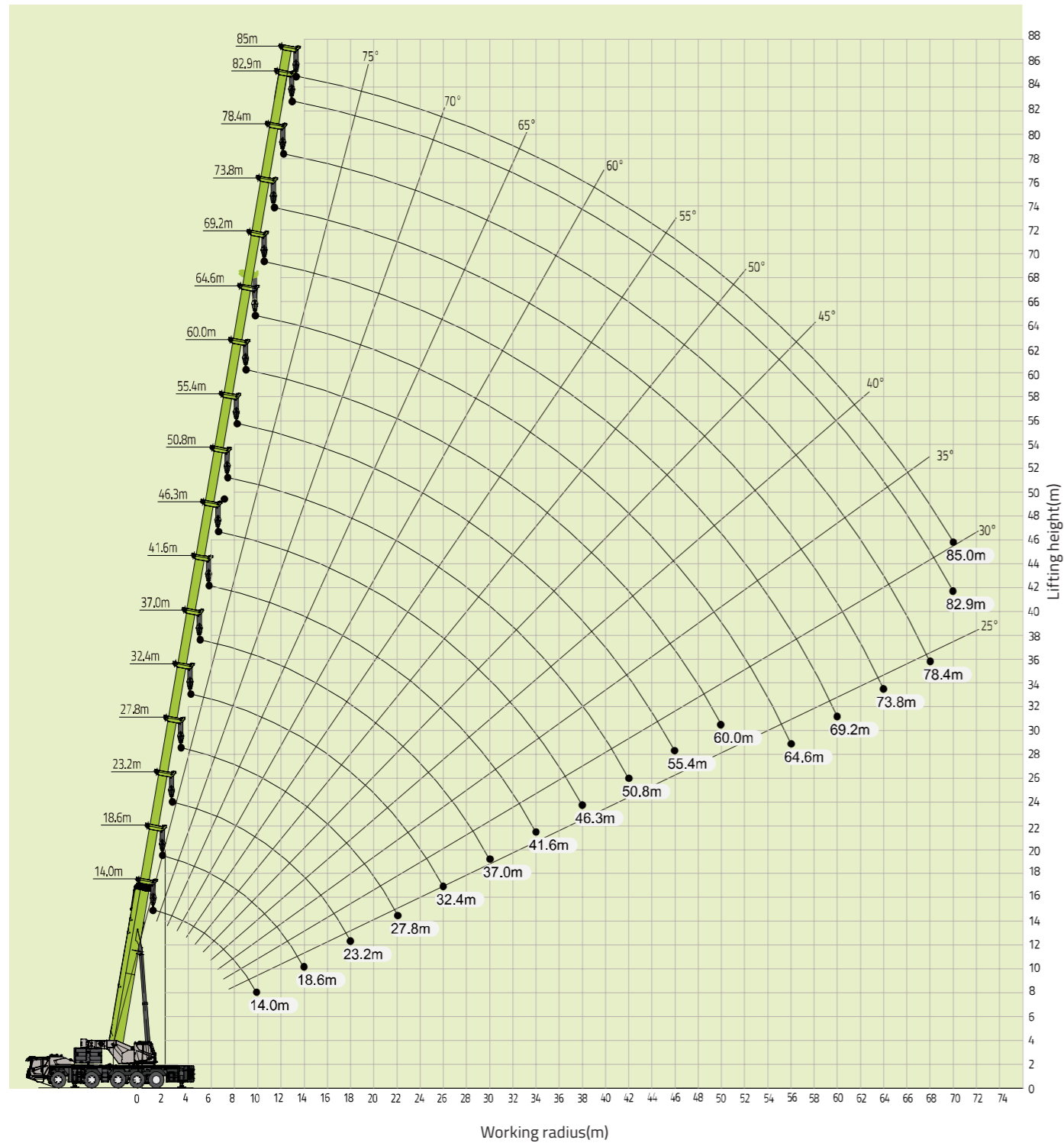
1. OMs marked with the asterisks (*) are nominal OMs. When the lifting capacity is more than 100 t, the hook and the pulley on the boom frame need to be modified. Contact the manufacturer in advance if necessary.
2. OMs marked with the pentacles () are optimal telescoping combinations.
3. Do not lift a load that is above the capacity of the crane under any condition, especially for small counterweight OM.
4. Do not perform the lifting operation when the wind speed exceeds the limit, especially for long boom length and large working radius OM.
5. A temperature difference occurs between the side facing the sun and the side facing away from the sun in cranes with telescopic booms. The sunshine will cause that the material of the boom frame expands in hot condition and shrinks in cold condition, which affect the straightness of the boom frame to some extent, especially on the lateral sunshine.
6. The graphic description is as follows.

Illustration for rated capacities



Lifting Height Chart

8-section main boom OM: 14 m – 85 m



Lifting Capacity Chart

Main boom



Unit: ton

Lifting height (m)	14m		18.6m					23.2m					27.8m					Lifting height (m)		
	★	★					★					★								
3.0	160*	115	100	90	35													3.0		
3.5	111	105	100	90	35	100	90	80	70	22								3.5		
4.0	103	96	95	90	34	95	90	80	68	21	90	80	70	52	24			4.0		
4.5	96	90	90	85	33	85	85	80	63	20	85	75	65	51	23			4.5		
5.0	90	85	85	80	31	81	81	75	60	19	80	70	60	50	22			5.0		
6.0	78	76	76	70	29.5	73	73	65	55	18	71	65	55	48	21			6.0		
7.0	69	65	65.5	65.5	27	64	65	60	50	17	63.5	58	50	43	19.5			7.0		
8.0	59	58	59	59	25	59	60	55	46	16	58	54	48	39	18			8.0		
9.0	52	52	53	53	23.5	53	54	50	42	15	53	48.5	45	35	16.5			9.0		
10.0	46.5	46	47	48	22	48	47	47	39	14	47	45.5	41	32	15			10.0		
12.0		39	40	40.5	19.5	39	39.8	40	33.5	12.3	39	39	35	28	13.5			12.0		
14.0		30	31	32	18	32	33	34	29.5	10.9	32.5	34	31	25	12			14.0		
16.0						26.5	28	29	26	9.8	27	28.5	28	22	11			16.0		
18.0						22	23	24.3	24	8.9	23	24.5	25	20	10			18.0		
20.0											19.5	21	22	18.5	9			20.0		
22.0											16.8	18.1	19.2	17	8.5			22.0		
Nmax	12		12						12						11					Nmax
Hook	110t																	Hook		
Telescoping mode	I	1	1	1	1	1	2	1	1	1	1	2	1	1	1	1	I			
	II	1	2	1	1	1	2	2	1	1	1	2	2	1	1	1	II			
	III	1	1	2	1	1	1	2	2	1	1	2	2	2	1	1	III			
	IV	1	1	1	2	1	1	1	2	2	1	1	2	2	2	1	IV			
	V	1	1	1	1	1	1	1	1	2	1	1	1	2	2	1	V			
	VI	1	1	1	1	1	1	1	1	1	1	1	1	1	2	2	VI			
	VII	1	1	1	1	2	1	1	1	1	3	1	1	1	1	3	VII			

Lifting Capacity Chart

Main boom



Unit: ton

m	32.4m					37m					41.6m					m	
	★					★					★						
5.0	75	60	50	38	17										5.0		
6.0	69	56	50	37	15										6.0		
7.0	63	54	48	35	14.3	61	46	35	22	14					7.0		
8.0	58	49	45.4	34.4	13	56	44	34	21	13	52	36	22	10	8.0		
9.0	53	45	41.7	31.7	12	52	41	33	20	12.2	50	35	21	9.8	9.0		
10.0	47.6	42	38.5	29.3	11	48	39	32	18.5	11.3	46	34	19.5	9	10.0		
12.0	39.7	36	33.2	25.7	9.5	39.5	34.4	28.4	17	10.6	40	31.9	18	8.3	12.0		
14.0	33.5	32	29.2	22.7	8.3	33.5	30.2	25.2	15.5	9.4	34	28.5	16	7.2	14.0		
16.0	28	28.5	25.9	20.3	7.4	28.5	26.7	22.7	14	8.4	29.5	25.6	15	6.3	16.0		
18.0	23.5	25	23.2	18.4	6.6	24.5	24	20.6	13	7.5	25.2	23	14	5.6	18.0		
20.0	20.5	21.8	21.2	16.7	6	20.5	22.5	18.9	12	6.8	22	20.9	13	5	20.0		
22.0	17.5	19	19.5	15.4	5.4	18.5	19.8	17.3	11.2	6.2	19.2	19.1	12	4.5	22.0		
24.0	15	16.5	17.5	14.2	4.9	16	17.5	16	10.4	5.7	16.9	17.5	11.5	4	24.0		
26.0	13	14.5	15.5	13.2	4.6	13.8	15.4	15	9.8	5.3	14.6	16.2	10.8	3.7	26.0		
28.0						12	13.5	14.1	9.2	4.9	12.8	14.4	10.1	3.3	28.0		
30.0						10.4	11.9	13	8.7	4.5	11.2	12.7	9.6	3	30.0		
32.0											9.8	11.4	9.1	2.7	32.0		
34.0											8.6	10.2	8.7	2.5	34.0		
36.0															36.0		
Nmax	9					8					7					Nmax	
Hook	90t														Hook		
Telescoping mode	I	2	1	1	1	1	2	1	1	1	1	2	1	1	1	I	
	II	2	2	1	1	1	2	2	1	1	1	2	2	1	1	II	
	III	2	2	2	1	1	2	2	2	1	1	2	2	2	1	III	
	IV	2	2	2	2	1	2	2	2	2	1	2	2	2	2	1	IV
	V	1	2	2	2	1	2	2	2	2	2	2	2	2	2	3	V
	VI	1	1	2	2	3	1	2	2	2	3	2	2	2	2	3	VI
	VII	1	1	1	2	3	1	1	2	3	3	1	2	3	3	VII	

Lifting Capacity Chart

Main boom



Unit: ton

m	46.2m				50.8m				55.4m				60m		m	
	★				★				★				★			
9.0	42.5	30	22	10											9.0	
10.0	40.5	28.5	21	9.6											10.0	
12.0	36.5	26	20	9	31	21	20	10.5	24	22	15.5	9.5			12.0	
14.0	32.8	22.9	18.5	8	27.5	20	19	10	23	21	14	9	19	19	14.0	
16.0	29.7	20.3	17	7.1	24.5	18.5	18	9.1	21.5	19.5	12.8	8.3	18.5	18.5	16.0	
18.0	26	18.1	15.7	6.3	22	17.3	17	8.2	19.5	18	11.7	7.5	17.5	17.5	18.0	
20.0	22.7	16.3	14.5	5.6	19.7	16.2	15.8	7.4	17.8	16.5	10.8	6.8	16	16.5	20.0	
22.0	20	14.8	13.7	5.1	17.8	15.1	14.4	6.8	16	15.5	9.9	6.2	14.7	15.4	22.0	
24.0	17.7	13.5	12.8	4.6	16.2	14.2	13.1	6.2	14.5	14.5	9.2	5.7	13.3	13.8	24.0	
26.0	15.5	12.3	12	4.2	14.7	13.3	12	5.7	13.1	13.5	8.6	5.2	12.1	12.5	26.0	
28.0	13.6	11.3	11.4	3.8	13	12.6	11	5.3	12	12.8	8	4.8	11	11.4	28.0	
30.0	12	10.4	10.8	3.5	11.4	12	10.1	4.9	10.9	11.8	7.5	4.4	10	10.5	30.0	
32.0	10.6	9.5	10.2	3.2	10	11.1	9.3	4.5	9.7	10.5	7.1	4.1	9.1	9.5	32.0	
34.0	9.4	8.8	9.8	2.9	8.8	10.1	8.6	4.2	8.7	9.5	6.6	3.8	8.3	9	34.0	
36.0	8.4	8.2	9.3	2.7	7.8	9	8	3.8	7.6	8.4	6.3	3.5	7.5	8.1	36.0	
38.0	7.4	7.6	8.6	2.5	6.9	8.1	7.4	3.5	6.7	7.5	5.9	3.3	6.6	7.3	38.0	
40.0					6	7.2	6.9	3.3	5.9	6.7	5.6	3.1	6	6.5	40.0	
42.0					5.3	6.5	6.4	3	5.1	5.9	5.3	2.8	5.2	5.8	42.0	
44.0									4.5	5.3	5.1	2.7	4.5	5.1	44.0	
46.0									3.9	4.6	4.8	2.5	3.9	4.5	46.0	
48.0													3.4	3.9	48.0	
50.0													2.9	3.4	50.0	
Nmax	5				4				3				3		Nmax	
Hook	60t														Hook	
Telescoping mode	I	2	1	1	1	3	2	1	1	3	3	1	1	3	3	I
	II	2	3	2	1	2	2	3	1	3	2	3	1	3	3	II
	III	2	2	2	1	2	2	2	1	2	2	2	2	3	2	III
	IV	2	2	2	2	2	2	2	3	2	2	2	3	2	2	IV
	V	2	2	2	3	2	2	2	3	2	2	2	3	2	2	V
	VI	2	2	2	3	2	2	2	3	2	2	3	3	2	2	VI
	VII	2	2	3	3	2	3	3	3	2	3	3	3	2	3	VII

Lifting Capacity Chart

Main boom

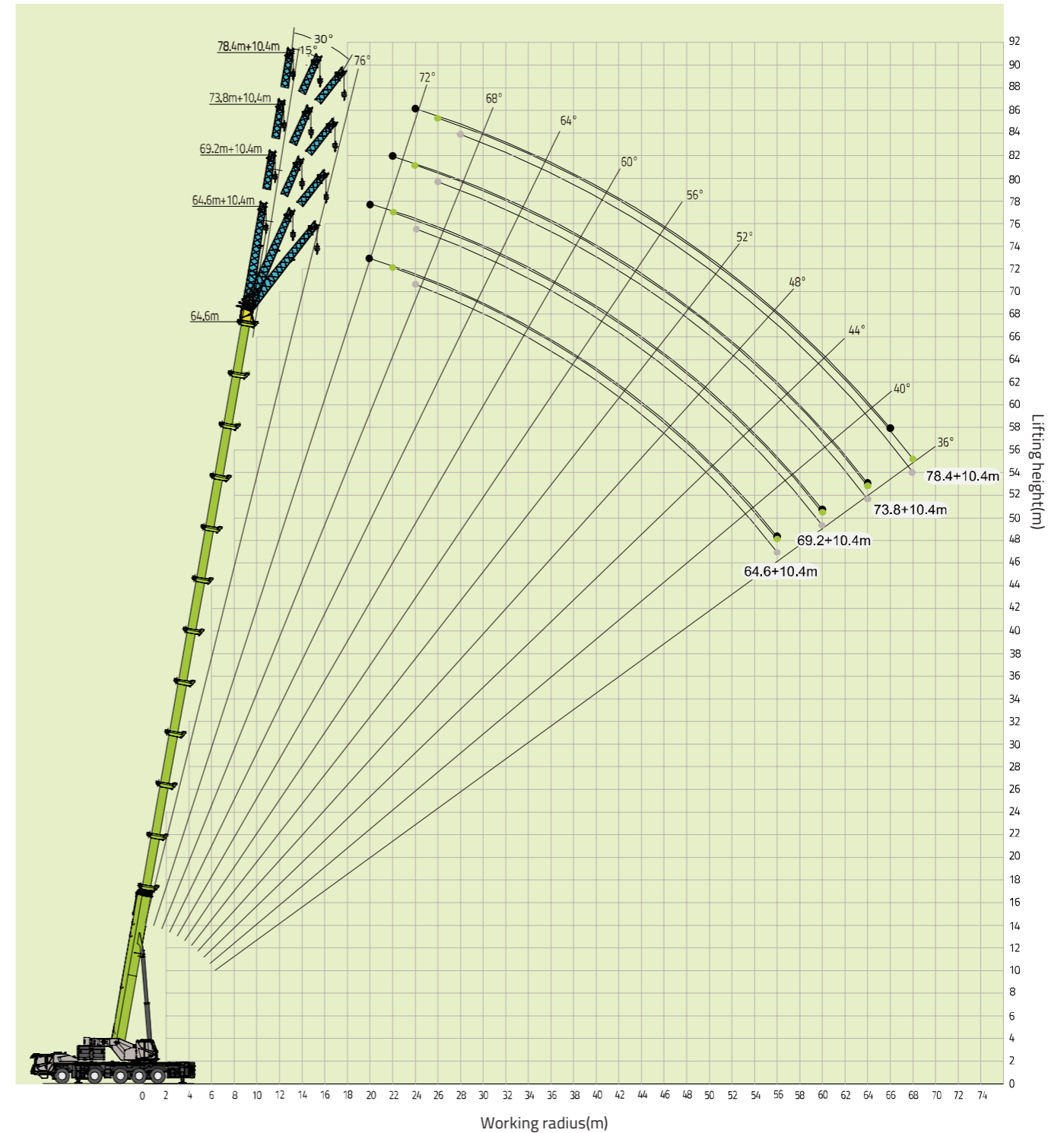


Unit: ton

m	60m		60m				69.2m			73.8m			78.4m	82.9m	85m	m	
	★		★				★			★			★	★	★		
14.0	14	9														14.0	
16.0	13	8	16	14	12	9	13	12.5	11							16.0	
18.0	12	7.5	15.5	13	11.5	8.5	13	12	10.5	10	10	9				18.0	
20.0	11	7	14.5	12	10.5	7.8	12.5	11.5	10	10	10	9	8.2			20.0	
22.0	10.3	6.6	13.5	11.2	10	7.1	12	11	9.5	10	10	9	8.1	6.7	6.4	22.0	
24.0	9.7	6	12.5	10.4	9	6.5	11	10.2	8.8	9.5	9.5	8.5	8	6.6	6.3	24.0	
26.0	9	5.5	11	9.7	8.5	6.1	10.7	9.5	8.2	9	9	8	7.9	6.5	6.2	26.0	
28.0	8.4	5.1	10.2	9	8	5.7	9.8	9	7.6	8.5	8.5	7.5	7.8	6.3	6.1	28.0	
30.0	7.8	4.8	9.4	8.4	7.4	5.3	9	8.4	7.1	8	8	7	7.6	6.2	6	30.0	
32.0	7.3	4.5	8.5	7.8	6.9	5	8.2	7.8	6.6	7.8	7.8	6.5	7.1	6.1	5.9	32.0	
34.0	6.8	4.1	7.8	7.3	6.4	4.6	7.5	7.3	6.1	7.2	7.3	6	6.7	6	5.8	34.0	
36.0	6.3	3.9	7.1	6.9	5.9	4.3	6.8	6.9	5.6	6.6	6.9	5.6	6.3	5.8	5.7	36.0	
38.0	5.8	3.6	6.5	6.5	5.5	4	6.2	6.4	5.2	6.1	6.4	5.2	5.9	5.4	5.5	38.0	
40.0	5.4	3.4	5.9	6.1	5.2	3.8	5.7	6.1	4.8	5.6	5.9	4.8	5.6	5.1	5.2	40.0	
42.0	5	3.2	5.2	5.8	4.8	3.6	5.2	5.7	4.4	5.1	5.4	4.5	5.2	4.9	4.9	42.0	
44.0	4.7	3	4.8	5.3	4.5	3.4	4.7	5.2	4	4.7	5	4.2	4.8	4.5	4.6	44.0	
46.0	4.3	2.8	4.2	4.9	4.2	3.1	4.3	4.9	3.7	4.3	4.6	3.9	4.4	4.2	4.2	46.0	
48.0	4	2.6	3.6	4.3	3.9	2.8	3.7	4.4	3.4	3.9	4.2	3.6	4.1	3.9	3.9	48.0	
50.0	3.7	2.5	3.1	3.8	3.7	2.6	3.4	3.8	3.1	3.5	3.9	3.3	3.7	3.6	3.6	50.0	
52.0			2.6	3.4	3.5	2.3	2.9	3.4	2.9	3.1	3.4	3.1	3.4	3.3	3.3	52.0	
54.0			2.2	2.9	3.3	2.1	2.5	2.9	2.7	2.9	3.2	2.9	3.1	3	3	54.0	
56.0			1.8	2.5	3.1	2	2.1	2.5	2.5	2.5	2.8	2.7	2.9	2.7	2.7	56.0	
58.0							1.7	2.1	2.3	2.1	2.4	2.5	2.5	2.5	2.4	58.0	
60.0							1.4	1.8	2.1	1.8	2	2.3	2.2	2.2	2.2	60.0	
62.0										1.4	1.7	2.1	1.9	2	1.9	62.0	
64.0										1.1	1.4	1.9	1.6	1.8	1.7	64.0	
66.0													1.3	1.5	1.4	66.0	
68.0													1.1	1.2	1.1	68.0	
70.0														1	0.9	70.0	
Nmax	3			3				3			3		3	3	3	Nmax	
Hook									25t							Hook	
Telescoping mode	I	1	1	3	3	2	1	3	3	1	3	3	2	3	3	4	I
	II	3	1	3	3	2	2	3	3	3	3	3	3	3	3	4	II
	III	3	3	3	2	2	3	3	3	3	3	3	3	3	4	4	III
	IV	2	3	3	2	3	3	3	2	3	3	2	3	3	4	4	IV
	V	2	3	2	2	3	3	3	2	3	3	3	3	3	4	4	V
	VI	3	3	2	3	3	3	2	3	3	3	3	3	3	4	4	VI
	VII	3	3	2	3	3	3	2	3	3	2	3	3	3	4	4	VII

Lifting Height Chart

Main boom + 10.4 m jib



Lifting Capacity Chart

Main boom + 10.4 m jib

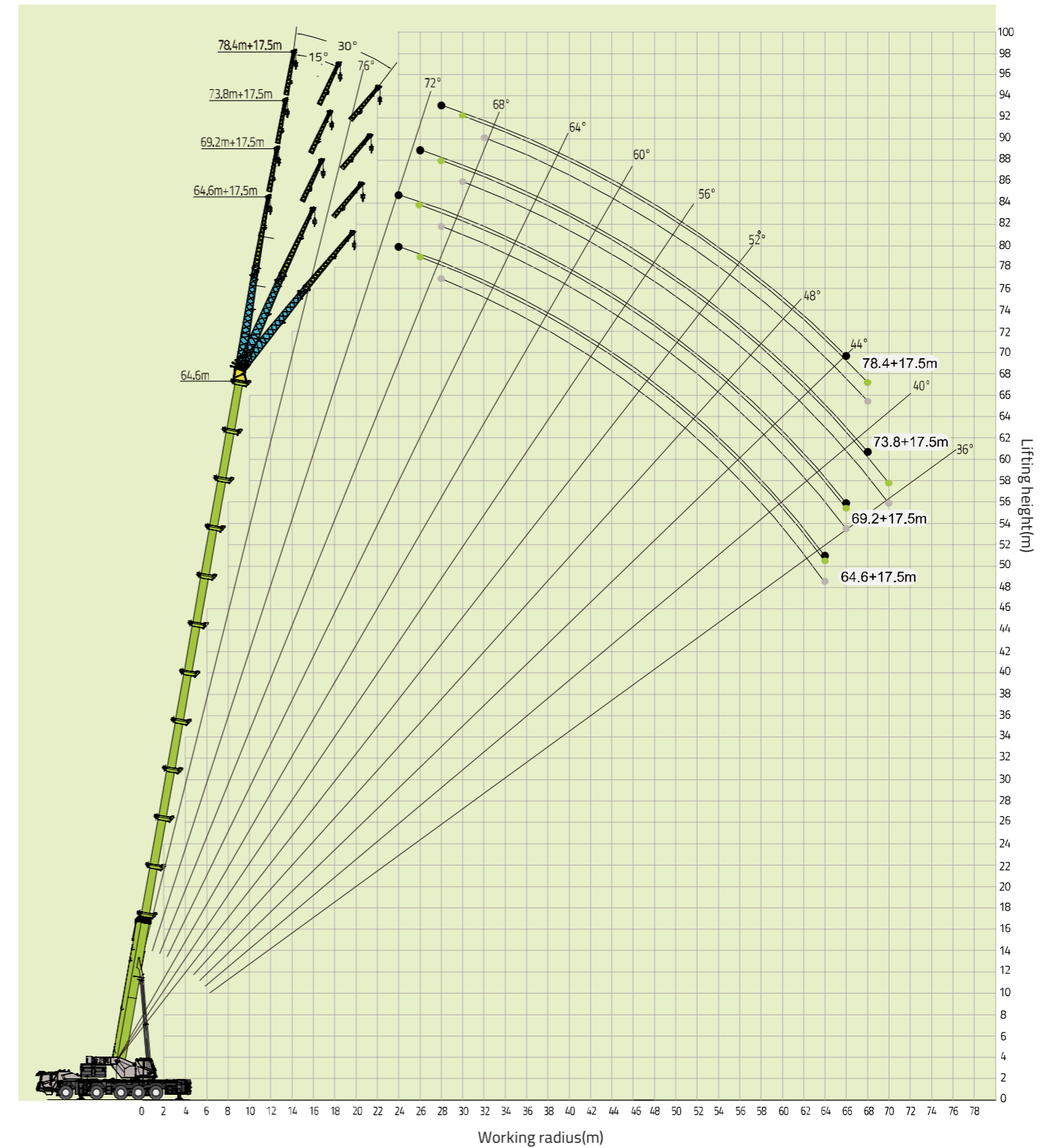


Unit: ton

Main boom + 10.4 m jib													
Main boom height (m)	64.6			69.2			73.8			78.4			Main boom height (m)
	0°	15°	30°	0°	15°	30°	0°	15°	30°	0°	15°	30°	
20.0	6.1			6.0									20.0
22.0	6.1	5.1		6.0	5.0		4.9						22.0
24.0	6.1	5.0	4.7	5.9	5.0	4.5	4.9	4.5		4.0			24.0
26.0	6.1	4.9	4.6	5.9	5.0	4.5	4.8	4.5	4.1	4.0	3.7		26.0
28.0	6.0	4.8	4.5	5.8	5.0	4.4	4.8	4.5	4.1	4.0	3.7	3.4	28.0
30.0	5.9	4.7	4.4	5.7	4.9	4.3	4.5	4.4	4.0	3.9	3.7	3.4	30.0
32.0	5.7	4.6	4.3	5.6	4.9	4.2	4.2	4.2	3.9	3.8	3.6	3.4	32.0
34.0	5.3	4.5	4.2	5.2	4.8	4.1	4.0	4.0	3.7	3.7	3.5	3.3	34.0
36.0	5.0	4.4	4.1	4.9	4.7	4.0	3.8	3.8	3.6	3.5	3.4	3.2	36.0
38.0	4.4	4.2	4.0	4.6	4.4	3.9	3.6	3.6	3.4	3.3	3.2	3.0	38.0
40.0	4.0	3.9	3.8	4.2	4.1	3.8	3.3	3.3	3.2	3.1	3.0	2.9	40.0
42.0	3.6	3.6	3.6	3.8	3.8	3.7	3.2	3.2	3.1	2.9	2.8	2.7	42.0
44.0	3.3	3.3	3.4	3.5	3.5	3.5	3.0	3.0	2.9	2.7	2.6	2.5	44.0
46.0	2.9	2.9	3.0	3.2	3.2	3.3	2.8	2.8	2.8	2.5	2.5	2.5	46.0
48.0	2.5	2.5	2.6	3.0	3.0	3.1	2.6	2.6	2.6	2.3	2.3	2.3	48.0
50.0	2.2	2.3	2.4	2.7	2.7	2.8	2.4	2.4	2.4	2.2	2.2	2.2	50.0
52.0	1.9	2.0	2.1	2.4	2.4	2.5	2.2	2.2	2.3	2.0	2.0	2.1	52.0
54.0	1.6	1.7	1.8	2.1	2.2	2.3	2.0	2.0	2.1	1.9	1.9	1.9	54.0
56.0	1.3	1.4	1.5	1.8	1.9	2.0	1.8	1.8	1.9	1.8	1.8	1.8	56.0
58.0				1.5	1.6	1.7	1.6	1.6	1.7	1.6	1.6	1.7	58.0
60.0				1.2	1.3	1.4	1.4	1.4	1.5	1.4	1.5	1.5	60.0
62.0							1.2	1.2	1.3	1.2	1.3	1.3	62.0
64.0							1.0	1.1	1.1	1.1	1.2	1.2	64.0
66.0										1.1	1.1		66.0
Nmax	1												Nmax
Hook	8t												Hook

Lifting Height Chart

Main boom + 17.5 m jib



Lifting Capacity Chart

Main boom + 17.5 m jib

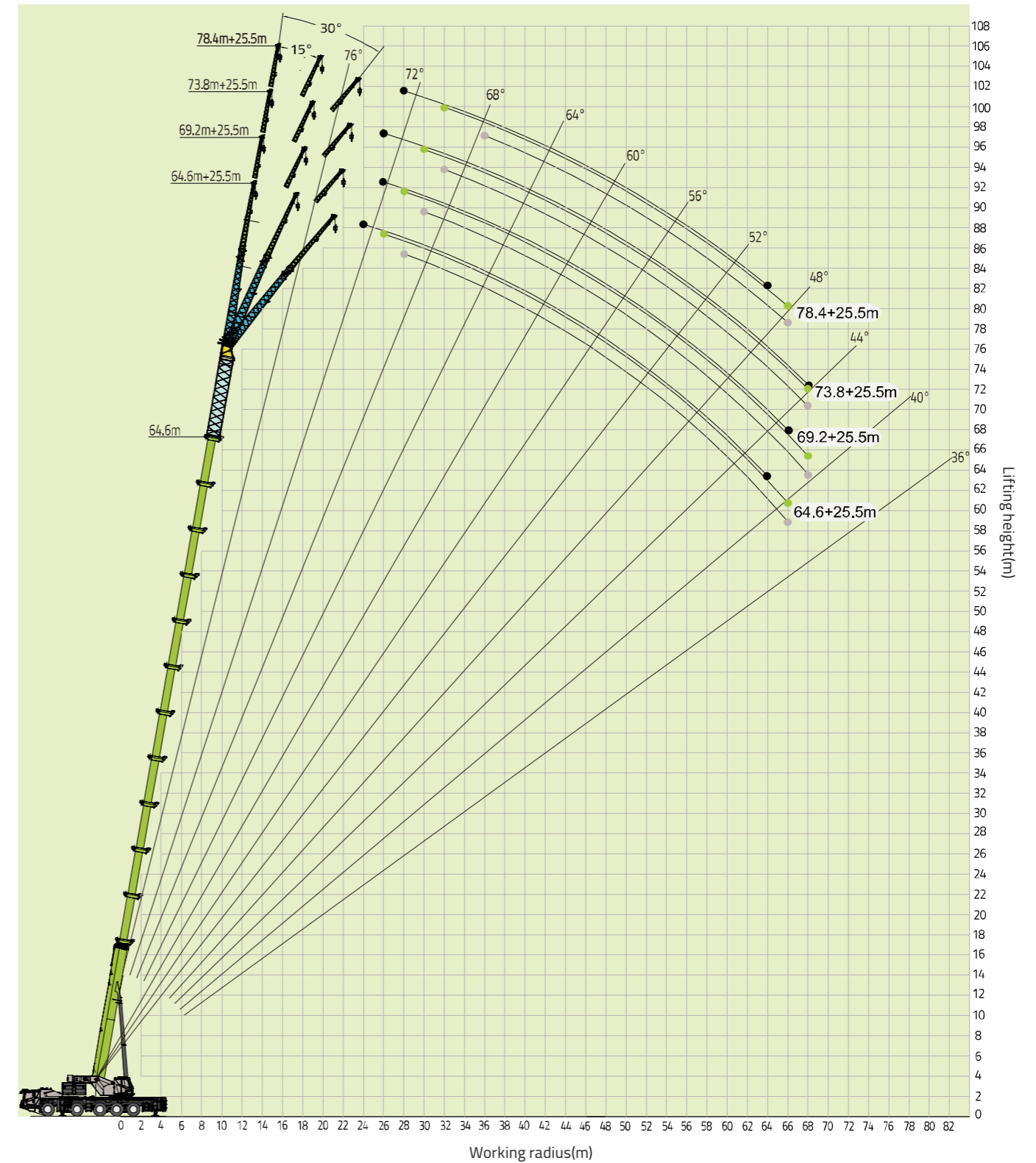


Unit: ton

Main boom + 17.5 m jib													
Main boom height (m)	64.6			69.2			73.8			78.4			Main boom height (m)
	0°	15°	30°	0°	15°	30°	0°	15°	30°	0°	15°	30°	
24.0	3.4			3.4									24.0
26.0	3.4	2.7		3.4	2.6		3.1						26.0
28.0	3.4	2.7	2.5	3.4	2.6	2.3	3.1	2.5		2.5			28.0
30.0	3.4	2.7	2.5	3.4	2.6	2.3	3.1	2.5	2.2	2.5	2.2		30.0
32.0	3.3	2.7	2.5	3.3	2.6	2.3	3.1	2.5	2.2	2.5	2.2	1.9	32.0
34.0	3.3	2.7	2.5	3.3	2.6	2.3	3.1	2.5	2.2	2.5	2.0	1.9	34.0
36.0	3.3	2.7	2.5	3.3	2.5	2.3	3.0	2.5	2.2	2.5	2.2	1.9	36.0
38.0	3.3	2.7	2.4	3.2	2.5	2.3	3.0	2.5	2.2	2.5	2.2	1.8	38.0
40.0	3.2	2.6	2.4	3.1	2.5	2.3	2.9	2.4	2.2	2.4	2.1	1.8	40.0
42.0	3.1	2.6	2.4	3.0	2.5	2.2	2.8	2.4	2.2	2.4	2.1	1.8	42.0
44.0	2.9	2.6	2.4	2.8	2.5	2.2	2.6	2.4	2.2	2.3	2.1	1.8	44.0
46.0	2.8	2.5	2.3	2.6	2.5	2.2	2.5	2.4	2.1	2.2	2.0	1.7	46.0
48.0	2.6	2.5	2.3	2.5	2.4	2.2	2.4	2.3	2.1	2.1	1.9	1.7	48.0
50.0	2.5	2.4	2.3	2.5	2.4	2.2	2.3	2.2	2.1	1.9	1.8	1.6	50.0
52.0	2.4	2.3	2.2	2.3	2.3	2.1	2.2	2.1	2.0	1.8	1.7	1.6	52.0
54.0	2.2	2.2	2.1	2.2	2.1	2.0	2.0	1.9	1.9	1.7	1.6	1.5	54.0
56.0	2.0	2.1	2.0	2.1	2.0	1.9	1.9	1.8	1.8	1.6	1.5	1.5	56.0
58.0	1.8	1.9	1.9	1.9	1.9	1.8	1.8	1.7	1.7	1.5	1.4	1.4	58.0
60.0	1.6	1.7	1.8	1.8	1.8	1.7	1.7	1.6	1.6	1.4	1.3	1.3	60.0
62.0	1.4	1.5	1.7	1.6	1.6	1.6	1.5	1.5	1.5	1.3	1.2	1.2	62.0
64.0	1.3	1.4	1.5	1.4	1.4	1.5	1.3	1.4	1.4	1.2	1.1	1.1	64.0
66.0				1.2	1.3	1.4	1.3	1.3	1.3	1.1	1.0	1.0	66.0
68.0							1.1	1.2	1.2	1.1			68.0
70.0								1.1	1.1				70.0
Nmax	1												Nmax
Hook	8t												Hook

Lifting Height Chart

Main boom + 25.5 m jib



Lifting Capacity Chart

Main boom + 25.5 m jib

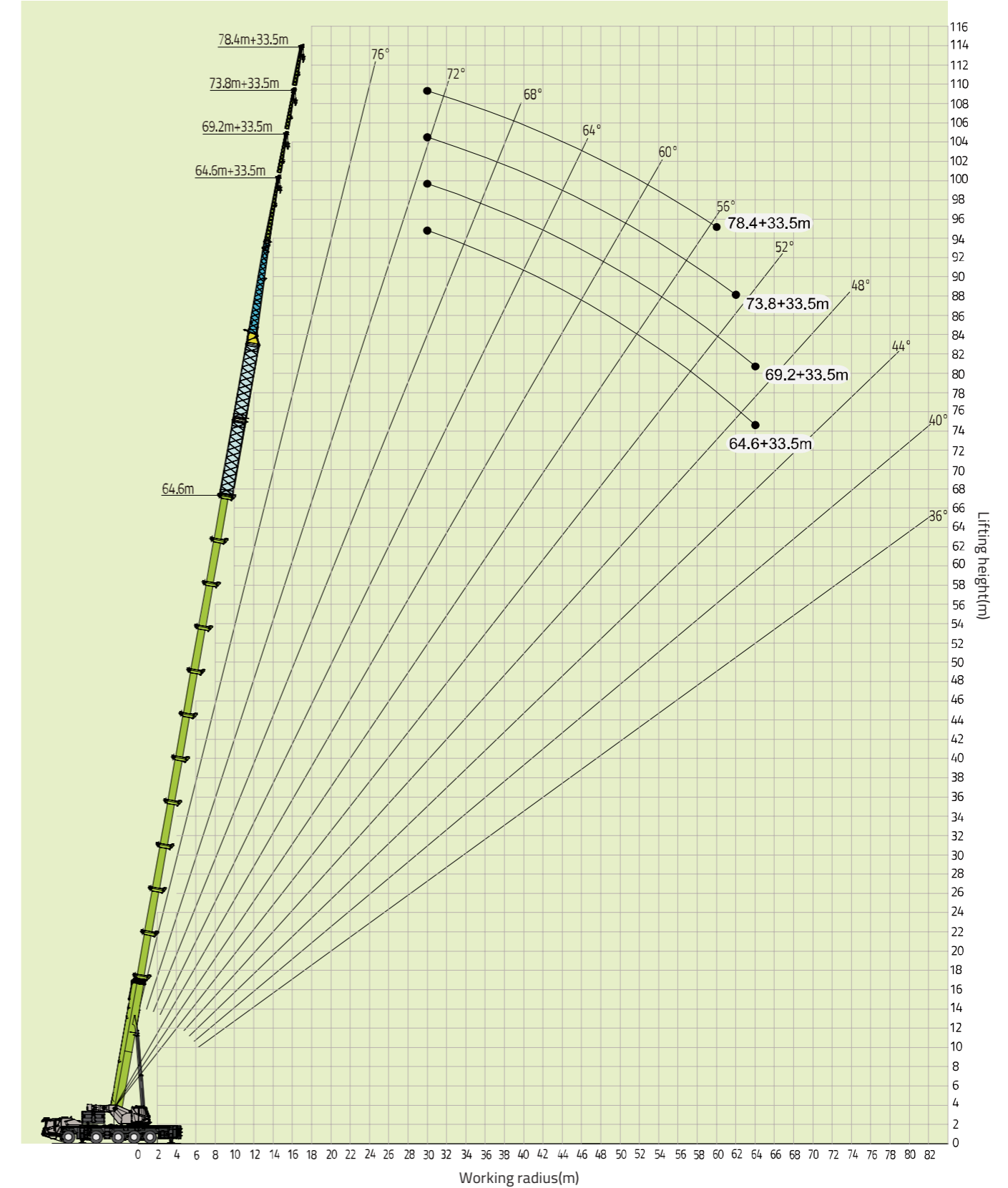


Unit: ton

Main boom + 25.5 m jib													
Main boom (m)	64.6			69.2			73.8			78.4			Main boom (m)
	0°	15°	30°	0°	15°	30°	0°	15°	30°	0°	15°	30°	
24.0	2.5												24.0
26.0	2.5	2.2		2.4			2.4						26.0
28.0	2.5	2.2	1.9	2.4	2.1		2.4			2.1			28.0
30.0	2.5	2.2	1.9	2.4	2.1	1.8	2.3	2.0		2.1			30.0
32.0	2.5	2.2	1.9	2.3	2.1	1.8	2.3	2.0	1.7	2.0	1.8		32.0
34.0	2.4	2.2	1.9	2.3	2.0	1.8	2.3	2.0	1.7	2.0	1.7		34.0
36.0	2.4	2.2	1.9	2.3	2.0	1.8	2.3	2.0	1.7	1.9	1.7	1.6	36.0
38.0	2.4	2.2	1.9	2.3	2.0	1.8	2.3	2.0	1.7	1.9	1.7	1.6	38.0
40.0	2.4	2.1	1.9	2.3	1.9	1.8	2.2	2.0	1.7	1.9	1.7	1.5	40.0
42.0	2.3	2.1	1.8	2.3	1.9	1.8	2.2	2.0	1.7	1.9	1.7	1.5	42.0
44.0	2.3	2.1	1.8	2.2	1.9	1.8	2.2	1.9	1.7	1.8	1.7	1.5	44.0
46.0	2.3	2.1	1.8	2.2	1.9	1.8	2.0	1.9	1.6	1.8	1.7	1.5	46.0
48.0	2.2	2.1	1.8	2.2	1.8	1.7	2.0	1.9	1.6	1.8	1.7	1.5	48.0
50.0	2.1	2.0	1.8	2.1	1.8	1.7	1.9	1.8	1.6	1.7	1.6	1.4	50.0
52.0	2.0	2.0	1.8	2.0	1.8	1.7	1.8	1.8	1.6	1.6	1.5	1.4	52.0
54.0	1.9	1.9	1.8	1.9	1.7	1.7	1.7	1.7	1.6	1.5	1.5	1.4	54.0
56.0	1.8	1.8	1.7	1.8	1.7	1.6	1.6	1.6	1.5	1.4	1.4	1.3	56.0
58.0	1.7	1.7	1.6	1.6	1.6	1.6	1.5	1.5	1.4	1.3	1.3	1.2	58.0
60.0	1.5	1.6	1.5	1.5	1.5	1.5	1.4	1.4	1.3	1.2	1.2	1.2	60.0
62.0	1.3	1.4	1.4	1.4	1.4	1.4	1.3	1.3	1.2	1.1	1.1	1.1	62.0
64.0	1.2	1.3	1.3	1.3	1.3	1.3	1.2	1.2	1.2	1.1	1.1	1.0	64.0
66.0		1.1	1.2	1.1	1.2	1.2	1.1	1.2	1.1		1.0	1.0	66.0
68.0					1.0	1.1	1.0	1.1	1.1				68.0
70.0													70.0
Nmax	1												Nmax
Hook	8t												Hook

Lifting Height Chart

Main boom + 33.5 m jib



Lifting Capacity Chart

Main boom + 33.5 m jib



Unit: ton

Main boom + 33.5 m jib					
	64.6	69.2	73.8	78.4	
	0°	0°	0°	0°	
30.0	1.7	1.6	1.5	1.3	30.0
32.0	1.7	1.6	1.5	1.3	32.0
34.0	1.7	1.6	1.5	1.2	34.0
36.0	1.7	1.6	1.5	1.2	36.0
38.0	1.7	1.5	1.5	1.2	38.0
40.0	1.6	1.5	1.4	1.2	40.0
42.0	1.6	1.5	1.4	1.2	42.0
44.0	1.6	1.5	1.4	1.1	44.0
46.0	1.6	1.5	1.4	1.1	46.0
48.0	1.5	1.4	1.3	1.1	48.0
50.0	1.5	1.4	1.3	1.1	50.0
52.0	1.5	1.4	1.3	1.1	52.0
54.0	1.5	1.4	1.3	1.1	54.0
56.0	1.4	1.3	1.2	1.0	56.0
58.0	1.4	1.3	1.2	1.0	58.0
60.0	1.3	1.2	1.1	1.0	60.0
62.0	1.2	1.1	1.0		62.0
64.0	1.1	1.0			64.0
Nmax	1				Nmax
Hook	8t				Hook

Note:

Telescoping combination of 64.6 m boom length: 3333222

Telescoping combination of 69.2 m boom length: 3333322

Telescoping combination of 73.8 m boom length: 3333332

Telescoping combination of 78.4 m boom length: 3333333

Jib variant 1 (10.4 m): Adaptor + jib section I

Jib variant 2 (17.5 m): Adaptor + jib section I + jib section II

Jib variant 3 (25.5 m): 8 m extension + adaptor + jib section I + jib section II

Jib variant 4 (33.5 m): 8 m extension + 8 m extension + adaptor + jib section I + jib section II

ZOOMLION

Zoomlion Heavy Industry Science & Technology Co.,Ltd.

Add: No.677, Lugu Road, Zoomlion Industrial Park, Changsha, Hunan, China, 410205

Copyright©2025 Zoomlion. All rights reserved. Reproduction and copying of any part of contents is not allowed for any purposes without Zoomlion's approval.



Product specifications are subject to change without notice and obligation. The photographs and/or drawing in this document are for illustrative purposes only. Please consult your local ZOOMLION dealer for more information.

website:en.zoomlion.com